

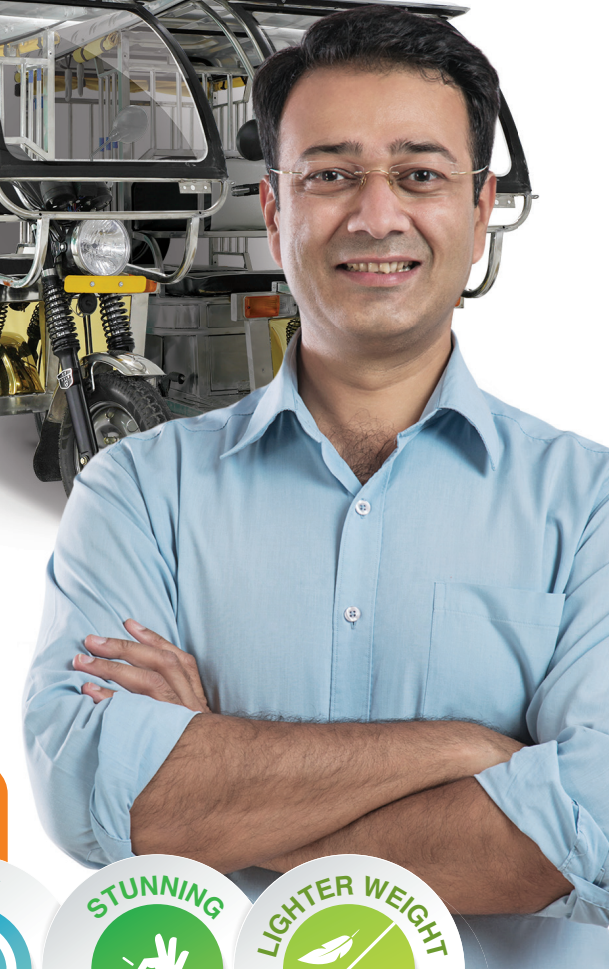
UPGRADE TO STAINLESS STEEL TAKE THE E-WAY TO INNOVATION

WITH INDIA'S FIRST STAINLESS STEEL E-RICKSHAW
POWERED BY JINDAL STAINLESS



www.jindalstainless.com | www.makestainless.com
Email: Marketing@jindalstainless.com
Manoj Bhutani: 8826818981 | Nimish Goel: 8826287666

ABC E-RICKSHAW PVT. LTD.



7 STAR PROMISE



THE SAGA OF SUCCESS.

INDIA'S NO. 1 STAINLESS STEEL BRAND

Founded by Shri O. P. Jindal in 1970, Jindal Stainless is one of the largest stainless steel conglomerates in India and ranks amongst the top 10 stainless steel conglomerates in the world. The group's credibility and name is determined by the magnitude of its operations which is inspired by a vision for innovation and enriching lives.

- ▶ INDIA'S LARGEST INTEGRATED PLANT WITH A COMBINED CAPACITY OF OVER 1.8 MN TONS AT JAJPUR AND HISAR
- ▶ CREATING A RANGE OF PRODUCTS FROM HOT/COLD ROLL COILS AND SHEETS TO RAZOR BLADES AND COMPONENT IN NUCLEAR REACTORS
- ▶ OVER 11000 PASSIONATE EMPLOYEES
- ▶ WORLD WIDE PRESENCE
- ▶ OVER 60% MARKET SHARE
- ▶ SUPPLIER TO OVER 32 SECTORS IN THE COUNTRY
- ▶ HAS THE LARGEST DISTRIBUTION NETWORK IN THE COUNTRY



OUR STRENGTH, YOUR PASSION.

WHY PARTNER WITH US?

Jindal Stainless has come to establish itself as a brand that's synonymous with trustworthiness. It makes perfect business sense to partner with the company that believes "A promise should always be kept!"



CONSULTANCY

Extensive consultancy from discovery to implementation.



LARGEST DISTRIBUTION NETWORK

Our nation-wide distribution network ensures that you will find us wherever.



RIGHT GRADE

Our R&D makes sure that we provide you with the best grade for your need.



TRANSPARENCY

Honest communication at every stage from material to sales.



AFTER SALES PROMISE

We make sure we are there for you even after the implementation.



PRODUCT POSSIBILITIES

Perfect metal for a spectrum of applications, from blades to nuclear reactors.



INNOVATION

Pioneers of industry first innovations across 32 sectors.

STAINLESS STEEL ADVANTAGE



Stainless Steel

Good combination of strength and pliability

Low

Much higher than CS (up to 5X)

Nearly 100%

Excellent

Key Parameters

Structural Strength

Maintenance

Average Product Life

Eco Friendly

Scrap Value

Carbon Steel

Pliability goes down when strength increases

High, frequently required

Less than SS (X)

Partially Recyclable

Low

Stainless Steel has a distinct edge over Carbon Steel and thus is preferred by the end users.

APPLICATIONS IN E-RICKSHAW

Stainless Steel sheets for seat

Longer life, corrosion resistant and lightweight.

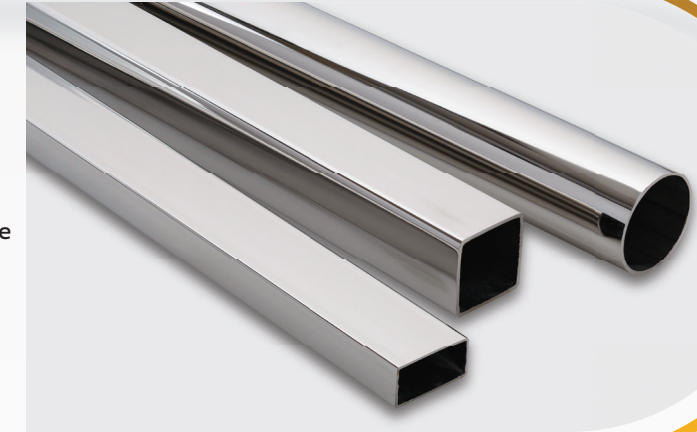
Grade - JT/304



Industrial Pipes & Tubes

Body strength and longer life

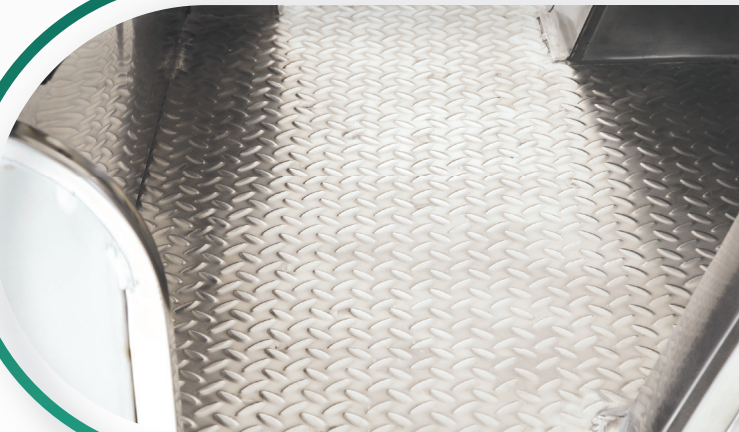
Grade - 304



Chequered sheet for floor

Anti-Skid safety feature

Grade - 430/304



Decorative Pipes for handles

Safety and aesthetics

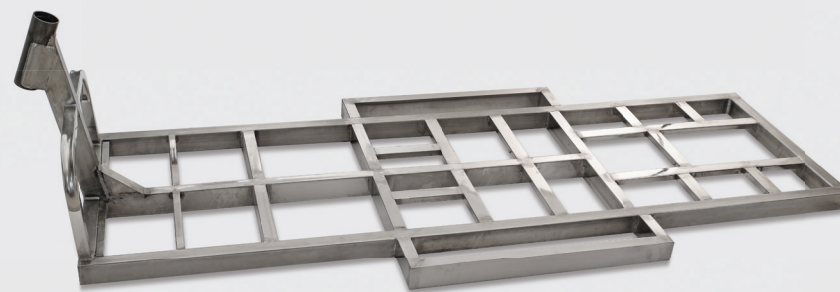
Grade - J4/JT



Stainless Steel Chassis

Higher corrosion resistance & overall vehicle stability

Grade - 304



LIFE CYCLE COST ANALYSIS

UP TO 32% MORE SAVINGS FOR YOUR CUSTOMERS TOO

DESCRIPTION	EXISTING	AFTER (WITH WEIGHT REDUCTION)	AFTER (WITHOUT WEIGHT REDUCTION)
Customer- Value Addition			
Segment	Automotive	Automotive	Automotive
Product	Electric Rickshaw	Electric Rickshaw	Electric Rickshaw
Material of Construction (Grade)	Other Material	JT/304/430/J4	JT/304/430/J4
Dimensions			
Weight of Material (Kg)	100	86	100
Total Cost (₹)	11700	19900	23000
Total Life	3 Years	5 Years	5 Years
Maintenance Cost (₹)	4000	1000	1000
Scrap Weight (Kg)	70	86	100
Life Cycle Cost/Year (₹)	4650	3148	3600
Savings		32%	23%
Other Benefits		Higher Efficiency; Higher Strength; More Safety; Lightweight;	Higher Efficiency; Higher Strength; More Safety; Lightweight;



NOTES

This image shows a blank sheet of white paper with horizontal ruling lines. There are 11 evenly spaced horizontal lines across the page. In the bottom-left corner, there is a solid orange triangle pointing upwards. The rest of the page is white and contains no other markings or text.

[illegible]